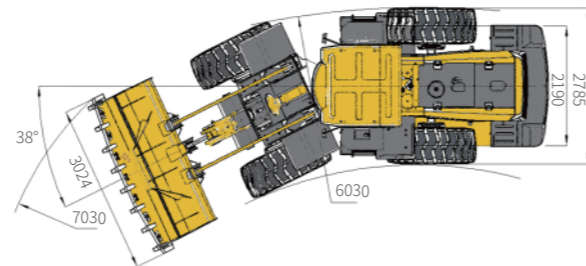
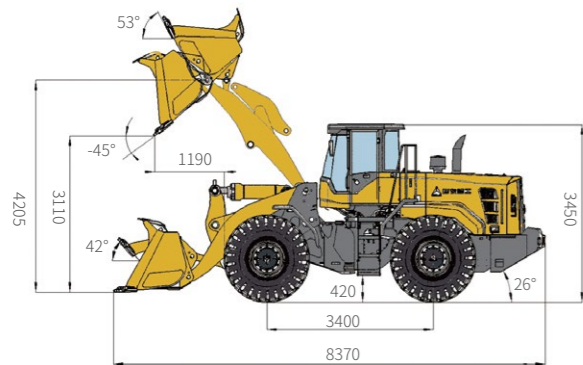


Main Parameter (Standard Equipment)

Item	Specifications	Item	Specifications
Overall parameter		Speed at FII/RII (km/h)	0~12.5
Operating weight (kg)	17600	Speed at FIII/RIII (km/h)	0~26.1
Rated load (kg)	5800	Speed at FIV/RIV (km/h)	0~38.2
LxWxH (mm)	8370x3024x3450	Hydraulic system of working device	
Bucket capacity (m ³)	3.5	System pressure	19.5MPa
Max. tractive force (kN)	160	Total cycle time (bucket lift & dump&fall)	≤10.6s
Max. breakout force (kN)	≥170	Steering system	
Tipping load (kN)	-	System pressure	16MPa
Engine		Fill capacity	
Rated power@speed (kW@r/min)	170@2200	Fuel (L)	300
Maximum torque @ speed (kN@r/min)	'1100@1400	Hydraulic oil (L)	220
Emission standard	GB20891-2007 (China phase II)	Engine (L)	25
Transmission system		Transmission (L)	17.1/4.7
Transmission type	Axis-fixed electric-hydraulic transmission	Drive axle (L)	30+30
Gears	F4 & R4	Braking system (L)	3.5
Speed at FI/RI (km/h)	0~6.8		



L958H WHEEL LOADER

Operation Weight : 17600 Kg
Bucket capacity : 3.5m³
Engine Power : 170 kW

Reliability in Action



Congratulations SDLG for winning
EFQM Global Excellence Award
 One of the top three quality awards in the world

Part of Volvo Group since 2007

SDLG is part of Volvo Group and one of the largest manufacturers of construction machinery in China, with a wide network of dealerships and service workshops throughout the world.



Shandong Lingong Construction Machinery Co.,Ltd

Add: Lingong Industry Park, Economic Development Zone, Linyi, Shandong, P, R, C.
 Tel: 0086-531-66590966 Fax: 0086-531-66590959 E-mail: export@sdlg.com



L958H Wheel Loader



High Efficiency

- FAW BFM8 engine tier 2 , keep the Deutz design philosophy
- Electronic unit pump and mechanical injector, good fuel adaptability low maintenance cost



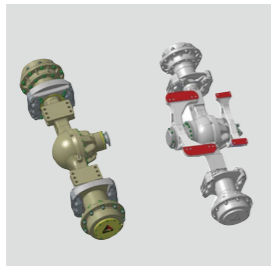
Leading technology

- 5 ton wheel loader with fully automatic transmission , F4/R4
- Finger tip joystick ,with FNR function



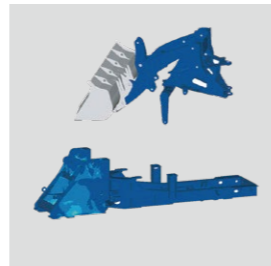
Heavy Duty

- Wheelbase 3400mm
- SDLG Strengthened structure Axle
- The unique rear axle double swing arm connection makes the load distribution of the whole machine reasonable



Greater Reliability

- New generation of boxed frame from volvo design concept
- The load distribution is reasonable;Fatigue test for 2000Hours,to get the greater reliability



Greater Lifting Capacity

- Rated load is improved to 5.4 ton, correspondingly the bucket volume is enlarged to 3.2 cbm, will give you higher return of investment
- Trapezoidal structure of leading plate, small working resistance, shovel with a hardmaterial, loading capacity increases by 10%



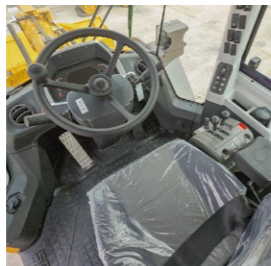
Serviceability

- New designed Engine hood provides larger opening angle, enable the technician do the service and repair easily
- Side-opening type steel-made engine hood with large side door, which is easy to maintain. Oil filters, air filters are all arranged in one side, can do the maintenance at one stop



Comfortability

- New generation "H" series Cabin, bring good vision field
- Finger tip joystick ,easy to control
- LCD screen, display the machine information



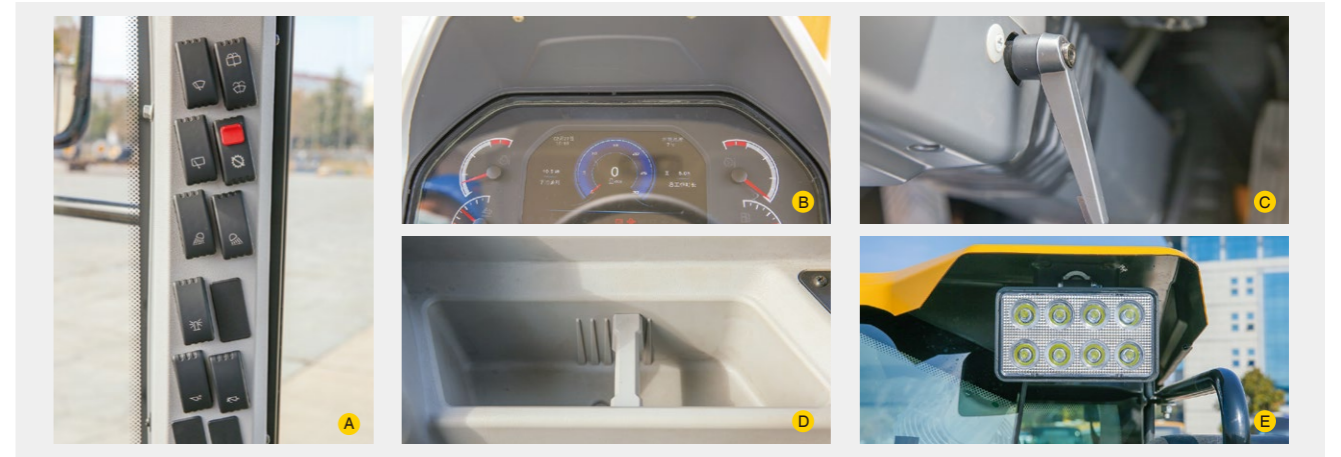
New Apperance

- SDLG new H series apprance, including the new cab, new engine hood and counterweight which looks more powerfull and beautiful



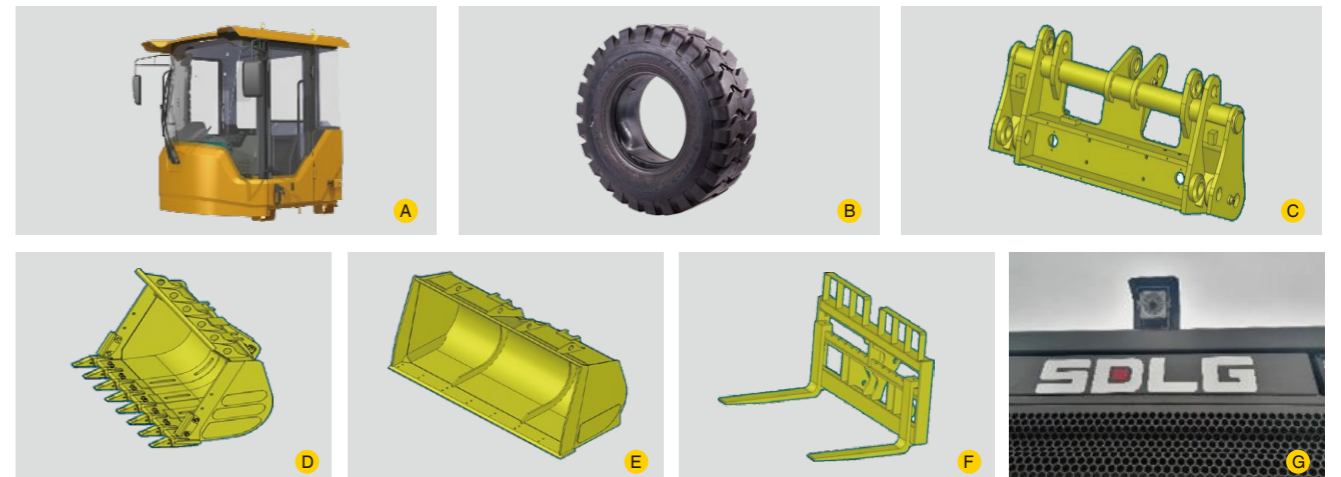
Standard Confugurations

FAW BFM8	Radio
SDLG Transimission	Sun Visor
SDLG enhanced axle	Clothes-hook
Finger tip joystick	Cup holder D
Load sensing full hydraulic steering	Air Pre-Filter
3.2m³ GP bucket with durable plate	Front Wiper
New H series cab	Work lights E
New rock switch A	Headlights Guard
Fresh air conditioning	Backing-up alarm
Digital combination instrument B	Front wheel 23.5-25-18PR-L3
Adjustable Steering column C	Rear wheel 23.5-25-16PR-L-3
Rearview mirror	Engine Fan Guard
Mechanic parking brake	Power Switch
	Tool box



Optional Equipment

Rops/Fops Cabin A	LED work lights	3.5m³ bucket	Pallet fork F
tyre 23.5-25-20PR-L3 B	Third connection main valve	2.7m³ rock bucket D	quick hitch bucket
23.5-25 nylon Tire 18PR/20PR	Quick Coupler C	3.6m³-4.5m³ light material bucket E	Rear View Camera G



* The right of final interpretation of the abovementioned parameters shall be reserved by SDLG. No further notice will be given in case of any change. Illustrations in the text may not always be the standard illustrations for this model.