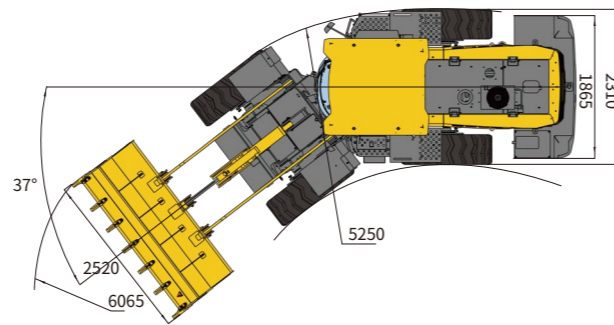
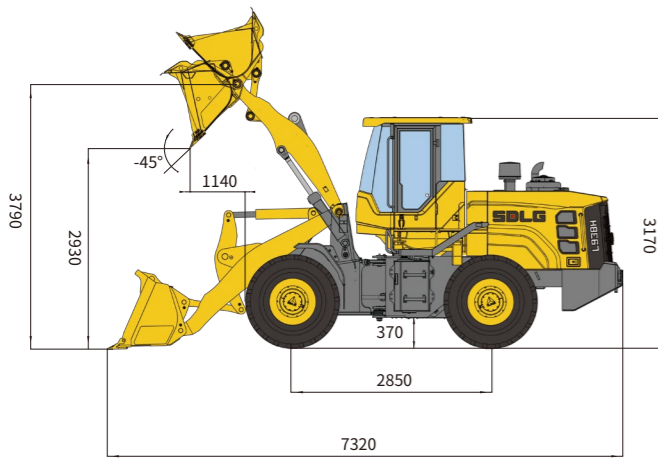


Main Parameter (Standard Equipment)

Item	Specifications	Item	Specifications
Overall parameter		Speed at FII/RII (km/h)	0-12
Operating weight (kg)	11450	Speed at FIII/RIII (km/h)	0-27
Rated load (kg)	3500	Speed at FIV (km/h)	0-36
LxWxH (mm)	7320×2520×3170	Hydraulic system of working device	
Bucket capacity (m ³)	2.1m ³ (1.5~3.0)	System pressure(Mpa)	17.5
Max. tractive force (kN)	100	Total cycle time(bucket lift&dump&fall)(s)	≤9.2
Max. breakout force (kN)	≥96	Steering system	
Tipping load (kN)	≥70	System pressure(Mpa)	14
Engine		Fill capacity	
Rated power@speed (kW@r/min)	105@2200	Fuel (L)	200
Maximum torque@speed (kN@r/min)	600@(1400-1600)	Hydraulic oil (L)	128
Emission standard	GB 20891-2014	Engine (L)	18
Transmission system		Transmission (L)	25
Transmission type	Axis-fixed electric-hydraulic transmission	Drive axle (L)	28+28
Gears	F4 & R3	Braking system (L)	2
Speed at FI/RI (km/h)	0-7		



L938H WHEEL LOADER

Operation Weight: 11450 kg
Bucket capacity: 2.1 m³
Engine Power: 105 kW

Reliability in Action



EFQM

Congratulations SDLG for winning
EFQM Global Excellence Award
One of the top three quality awards in the world

Member of the VOVLO Group since 2007

SDLG is a member of the Volvo Group and one of the largest manufacturers of construction machinery in China, with a wide network of dealerships and service workshops throughout the world.

Shandong Lingong Construction Machinery Co., Ltd

Add: Lingong Industry Park, Economic Development Zone, Linyi, Shandong, P, R, C.
Tel: 0086-531-66590966 Fax: 0086-531-66590959 E-mail: export@sdlg.com.cn





L938H

Wheel Loader

HIGH EFFICIENCY

- WEI CHAI Engine Tier 2/ T3
- The energy-saving low-speed engine fits well with the high-efficiency
- High market share and high reliability; Low maintenance cost



HIGH RELIABILITY

- 5 ton level planetary Gearbox, F2/R1
- Easy to operate, shift smoothly, high efficiency and more economic, Mature products and high reliability



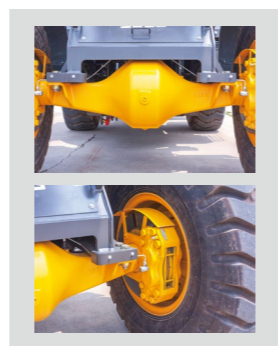
HEAVY-DUTY

- 4 ton level drive Axle
- The drive axle is stronger and its reliability is increased by more than 60%



GREATER RELIABILITY

- The hub reduction and final drive assembly adopt double oil seal sealing structure
- Protection device for front axle brake caliper
- Braking is safer and maintenance is more convenient



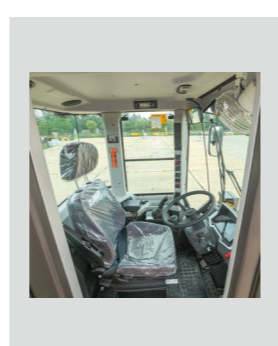
GREATER CARRYING CAPACITY

- Equipped automatic reset system, bucket flat automatically ensure that the bucket placed with parallel to the ground floor, reduce the shift of the operating handle, improve working efficiency



CONVENIENCE

- The ergonomic design of new type of cab, wide vision, good sealing and low noise, to realized a comfortable driving environment. Option: FORPS&ROPS Cab



Standard Configurations

WeichaiWP6G140E330

SDLG Transmission		Cup holder	
SDLG dry brake Axle		Air Pre-Filter	
Single joystick Pilot control	A	Front & rear Wiper	
2.1m³GP bucket with teeth		Work lights	
Standard Cabin		Backing-up alarm	
Fresh Air conditioning	B	17.5-25-16PR Tire	
H serial Cab	C	Adjustable Steering column	E
Digital combination instrument	D	Neutral Start	
Air control parking brake		Centralized control box	F
Radio		Power Switch	
Sun Visor		Tool box	
clothes-hook		Three-stage Fuel filter	



Optional Equipment

Extension arm	A	Rotating beacon	1.5m³-1.8m³ Rock bucket	E	Pallet fork	I
Rops/Fops Cabin		3rd function connector	1.6m³-3.0m³ light material bucket	F		
Oil batch air filter	B	Heater	Log grapple	G		
LED work lights	C	Rotatable oil cooler	Grass gripper	H		



* The right of final interpretation of the abovementioned parameters shall be reserved by SDLG. No further notice will be given in case of any change. Illustrations in the text may not always be the standard illustrations for this model.