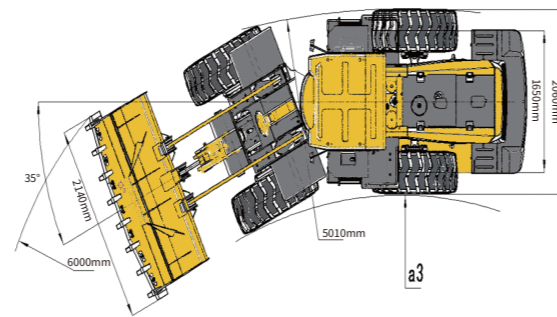
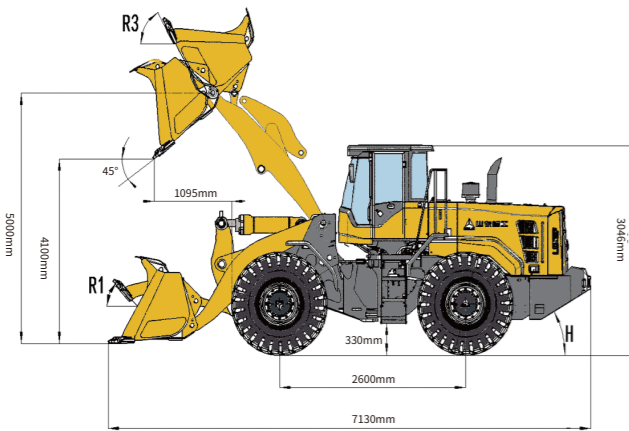


Main Parameter (Standard Equipment)

| Item | Specifications | Item | Specifications |
|----------------------------------|--------------------------------|--|---------------------|
| Overall parameter | | | |
| Operating weight(kg) | 6565kg | Speed at F2/R2 (km/h) | 0~13km/h |
| Rated load(kg) | 1500kg | Speed at F3/R3 (km/h) | 0~19km/h |
| L x W x H(mm) | 7130×2140×3046mm | Speed at F4/R4 (km/h) | 0~33km/h |
| Bucket capacity(m ³) | 2.0m ³ | Hydraulic system of working device | |
| Max.tractive force(kN) | ≥56kN | System pressure(MPa) | 20 MPa |
| Max.breakout force(kN) | 49 kN | Total cycle time(bucket lift &dump&fall)(s) | ≤13s |
| Tipping load(kN) | - | Steering system | |
| Engine | | | |
| Rated power@speed(kW@r/min) | 76kW | System pressure(Mpa) | 16 MPa |
| Maximum torque@speed(Nm@r/min) | 274/2000 | Fill capacity | |
| Emission standard | GB 20891-2007(China phase II) | Fuel(L) | 90L |
| Transmission system | | | |
| Transmission type | Fixed shaft power shift | Hydraulic oil(L) | 52 L |
| Gears | Forward 4 reverse 4 | Engine(L) | 7-9 L |
| Speed at F1/R1 (km/h) | 0~7km/h | Transmission(L) | 27 L |
| | | Drive axle(L) | Front 8.5L+Rear 9 L |
| | | Braking system(L) | 4L |



L916H PLUS WHEEL LOADER

Operation Weight: 6565 kg
 Bucket Capacity: 2.0m³
 Engine Power: 76 kW

Reliability in Action



EFQM

Congratulations SDLG for winning
EFQM Global Excellence Award
 One of the top three quality awards in the world

Member of the VOVLO Group since 2007

SDLG is a member of the Volvo Group and one of the largest manufacturers of construction machinery in China, with a wide network of dealerships and service workshops throughout the world.

Shandong Lingong Construction Machinery Co.,Ltd

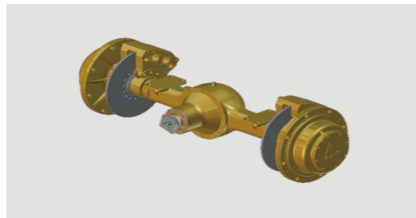
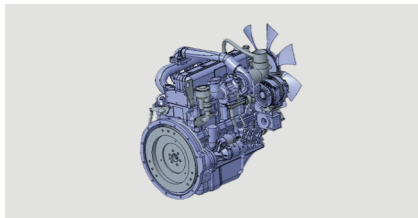
Add: Lingong Industry Park, Economic Development Zone, Linyi, Shandong, P, R, C.
 Tel: 0086-531-66590966 Fax: 0086-531-66590959 E-mail: export@sdlg.com



L916H PLUS Wheel Loader

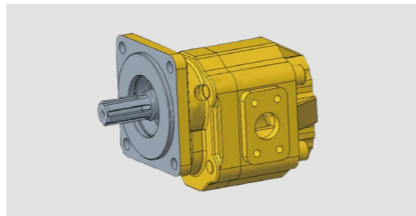
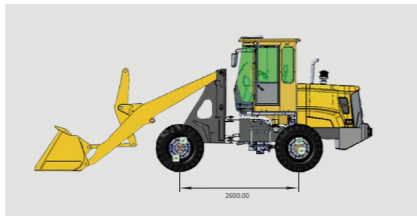
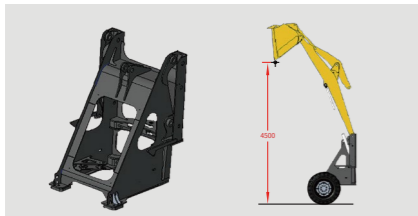
RELIABILITY

- Quanchai 4C6 engine, China phase II emission, engine power was increased 22% and up to 76KW
- SDLG customized & reinforced fixed shaft power shift transmission with F4&R4 gears.
- SDLG customized & reinforced, one-stage planetary hub reduction drive axle.



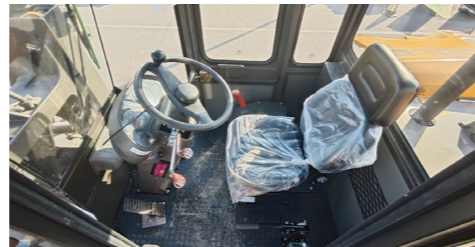
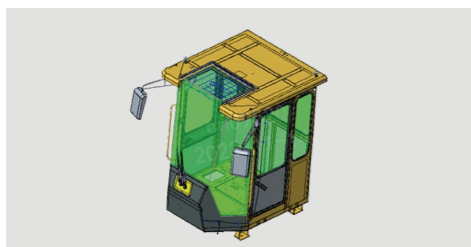
HIGH EFFICIENCY

- Max. dumping height up to 4100mm, and improving the rated load capacity up to 1500kg (Full turn). Can easily running the standard 2.0m³ grain bucket in agricultural product loading applications.
- Long wheelbase ensures the stability and efficiency. stably running and efficient operation of the whole machine
- Increase the displacement of the steering pump, shorten the working cycle time and improve the working efficiency



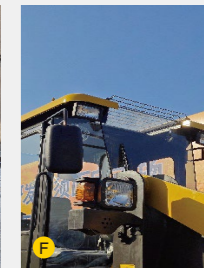
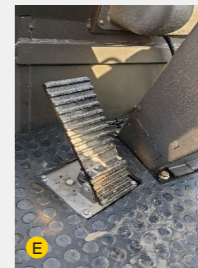
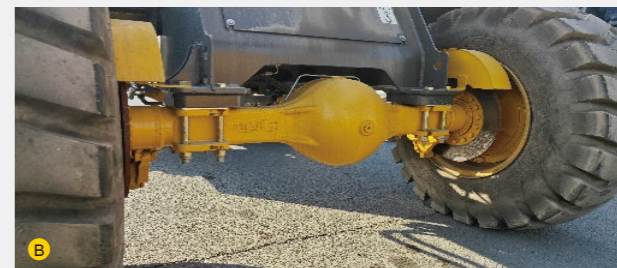
COMFORT

- Equipped with no obstructed view skylight, good view of material unloading under ultra-high working conditions
- The cab space is large and the sealing is good. Engine, cab, and seat three-stage shock absorption



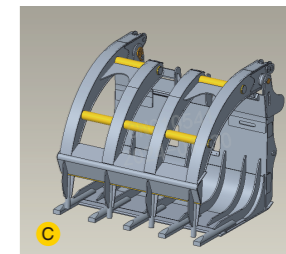
Standard Configurations

| | | | |
|---|---|--|---|
| Quanchai 4C6-88M22 engine | A | 2-spool Valve | F |
| SDLG customized & reinforced Jinlite transmission | B | Enhanced cabin with skylight | G |
| SDLG customized & reinforced Jinlite axle | C | Tyre GB2980-16/70-20 | H |
| Mechanical single joystick | D | Enlarged bucket 2.0x2500 (Without wear plates) | I |
| Long-reach boom | E | Cigarette lighter | |
| Single brake pedal | | Multi-function instrument panel | |



Optional Equipment

| | | | | | |
|--|---|-----------------------------|---|---------------|---|
| Cab Front working lights LED (2 units) | A | Air conditioner wear plates | B | Rotate beacon | B |
| Cab and cover working lights LED (4 units) | | Air conditioner wear plates | C | Pitchfork | C |



* The right of final interpretation of the abovementioned parameters shall be reserved by SDLG. No further notice will be given in case of any change. Illustrations in the text may not always be the standard illustrations for this model.