

Equipment and Features

STANDARD EQUIPMENT	
	ER636H
Engine	
Yanmar engine	S
Two-stage air filters	S
Three-stage fuel filters	S
Fuel water separator	S
Electrical/Electronic control system	
AUTO Idle	S
Central fuse box	S
LED work lights (Frame-mounted 3 & Boom-mounted 1 LH)	S
Battery, 12V	S
Master electrical disconnect switch	S
Start motor, 12V	S
Lock lever	S
Hydraulic system	
Load-sensing hydraulic system	S
Boom/Arm/Swing priority	S
Boom/Arm regeneration	S
Boom Swing	S
Cylinder/motor cushioning	S
Antifouling sealing	S
Hydraulic oil (ISO HV46)	S
Multi-stage filtration	S
Frame	
Reinforced revolving frame	S
Dozer blade	S
Rear-view mirror	S
Tool storage area	S

Undercarriage	
Durable "X" under-carriage	S
Reinforced carrier/top roller	S
Cab and interior	
Fabric operator seat with suspension	S
Seat belt	S
Joysticks	S
Radio	S
Master key	S
Hour meter	S
Air conditioner	S
Sliding wind screen	S
OPTIONAL EQUIPMENT	
ER636H	
Electrical/Electronic control system	
Rotating warning beacon	o
Undercarriage	
Rubber track	o
Attachment	
Ditching bucket	o
Hammer and shear pipes	o
Breaker	o



ER636H

Hydraulic Excavator



Congratulations SDLG for winning
EFQM Global Excellence Award
 One of the top three quality awards in the world

Member of the VOLVO Group Since 2007

SDLG is member of the Volvo Group and one of the largest manufacturers of construction machinery in China, with a wide network of dealerships and service workshops throughout the world.

Shandong Lingong Construction Machinery Co.,Ltd

Add: Lingong Industry Park, Economic Development Zone, Linyi, Shandong, P, R, C.
 Tel: 0086-531-66590966 Fax: 0086-531-66590959 E-mail: export@sdlg.com.cn



Reliability in Action

ER636H Hydraulic Excavator



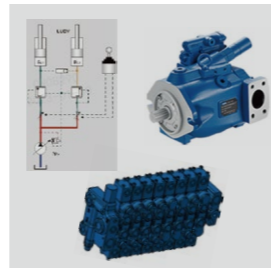
POWERFUL YET ENERGY-SAVING

- Yanmar 3TNV88-Z engine, four valve mechanism, large air intake, fully combust, lower energy consumption. EECU control machine running, electro-regulator control fuel supply, accurate distribution, energy saving.



SMOOTH-OPERATIONS

- Which has quick action response, and better energy saving performance, action independent and coordinated when operate compound action, provides high working efficiency. Famous brand pump and valve has good quality and long lifetime.



EASY TO MAINTAIN

- Large opening hood, has large maintenance space, operator can finish maintenance stand on the ground.
- Filter gathered, electrical part gathered, and with pressure test port, easy to check and detect.



MULTI-PURPOSE

- With hammer and shear pipes, pipeline reasonable arrangement, can install breaker, shear and other attachment easily, multi-purpose design, equipped with multi-function lever, easy to operate.



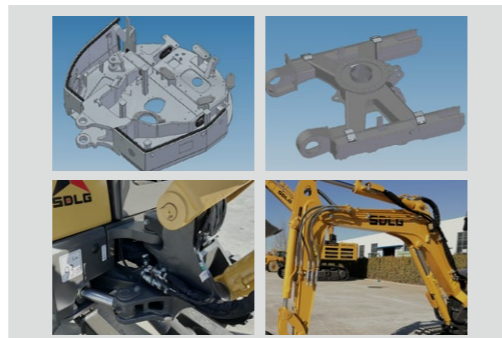
SAFE AND COMFORTABLE

- Cab with skylight and big front window, the front vision is large.
- The front window can slide up, that's convenient for digging work to observe front condition.
- Rear part with large arc window, good vision and beautiful.

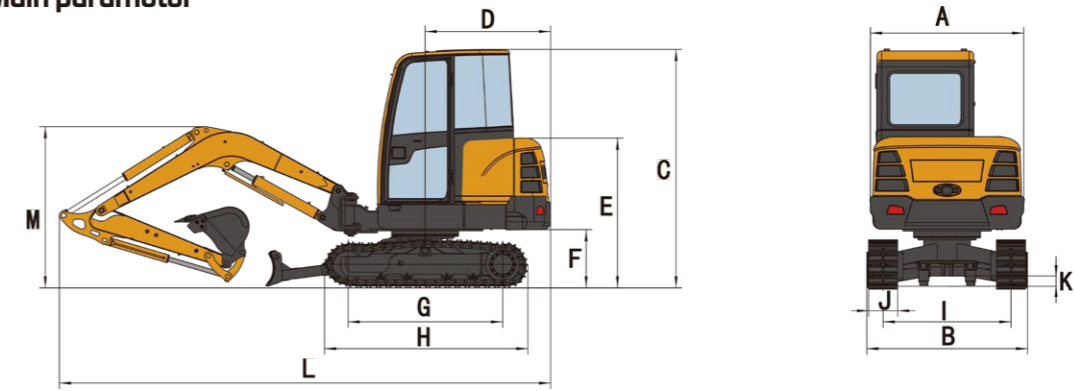


RELIABLE AND DURABLE

- Boom swing bracket use integrated casting structure, strong and reliable.
- Working device using high tensile strength steel, Axis integral casting, Add welding clap-board among parts, Robot welding, the weld flaw detector to detect, reliable and durable.
- Upper frame for whole welding, used double T structure and more strength, Uniform load distribution, good rigidity.
- Using box-type structure as a whole of X-frame, more reliability.



Main parameter



Item	Specifications
Overall dimension	
LxWxH (LxBxC)	4850x1700x2570 mm
Overall width of upper assembly (A)	1500 mm
Tail swing radius (D)	850 mm
Overall height of engine hood (E)	1515 mm
Wheel base (G)	1685 mm
Crawler length (H)	2170 mm
Crawler gauge (I)	1400 mm
Crawler pad width (J)	300 mm
Min. ground clearance (K)	220 mm
Overall height of boom (M)	1620 mm
Overall parameter	
Bucket capacity	0.12 m³
Overall operating weight	3800 kg
Max. excavation force	32 KN
Slew speed	9.0 r/min
Traveling speed (low/high)	2.4/4.4 km/h
Average ground pressure	33.5 kPa
Max. digging radius	5340 mm
Max. digging depth	3100 mm
Max. digging height	4700 mm
Max. dumping height	3380 mm
Min. front swing radius	2275 mm
Engine	
Model	3TNV88-ZCSC
Type	Three-cylinder, Inline, Water-cooled
Rated Power/Revolution Speed	20.4kw/2200r/min

Item	Specifications
Displacement	1642mL
Cylinder bore x stroke	88x90
Emission standard	GB20891-2014(China phase IV)
Rated fuel consumption	220g/kw.h
Max. torque	101.8N.m
Traveling/swing system	
Qty. of carrier rollers (single side)	1
Qty. of track rollers (single side)	4
Traveling brake type	wet disc
Swing mode	Hydraulic drive internal tooth single-row ball-bearing
Swing brake type	wet disc
Hydraulic system	
Hydraulic control type	Pilot proportional control valve
Hydraulic system type	Constant power load sensitive single pump
Max. flow	88L/min
Main pump model	HP5V45
Operating pressure	23.5 MPa
Main valve model	HVS09
Arm cylinder - cylinder bore x diameter of piston rod x stroke	1-80x50x670mm
Boom cylinder - cylinder bore x diameter of piston rod x stroke	1-90x50x559mm
Bucket cylinder - cylinder bore x diameter of piston rod x stroke	1-70x45x485mm
Fill capacity	
Fuel	33L
Engine oil	6.7L
Hydraulic oil	35L
Traveling reducer	2x0.6L
Cooling liquid	8L

* The right of final interpretation of the abovementioned parameters shall be reserved by SDLG. No further notice will be given in case of any change. Illustrations in the text may not always be the standard illustrations for this model.