

# Equipment and Features

## STANDARD EQUIPMENT

E680F	
<b>Engine</b>	
Yanmar engine	S
Turbocharger	-
Two-stage air filters	S
Three-stage fuel filters	S
Oil-water separator	S
Pre-heater	S
<b>Electrical/Electronic control system</b>	
Engine safe start with restart prevention	S
Idling switch	S
Auto-idle function	S
9 work modes	S
Central fuse box	S
Halogen work lights (Frame-mounted 2 & Boom-mounted 1 LH)	S
Battery, 12V	S
Master electrical disconnect switch	S
Start motor, 12V	S
Colour monitor	S
Lock lever	S
<b>Hydraulic system</b>	
Load-sensing hydraulic system	S
Boom/arm/swing priority	S
Boom/arm regeneration	S
Boom/arm holding	S
Two speed travel motors	S
Cylinder/motor cushioning	S
Dust sealing	S
Hydraulic oil (ISO VG46)	S
Multi-stage filtration	S
<b>Frame</b>	
Reinforced revolving frame	S
Dozer blade	S
Rear-view mirror	S
Tool storage area	S

## Undercarriage

Durable "X" under-carriage	S
Greased and sealed track links	S
Reinforced carrier/top rollers	S
Steel track with triple grousers	S

## Cab and interior

Fabric operator seat with suspension	S
Seat belt	S
Joysticks	S
Radio with MP3/AUX	S
Master key	S
Hour meter	S
Sun visor	S
Dual arm rests	S
Air conditioner	S
Sliding wind screen	S

## OPTIONAL EQUIPMENT

E680F	
<b>Electrical/Electronic control system</b>	
Fuel filler pump	o
Extra halogen work lights (Cab-mounted 1/ Boom-mounted 1RH)	o
Rotating warning beacon	o
Rear-view camera	o
<b>Hydraulic system</b>	
High-temperature/Low-temperature hydraulic oil module	o
<b>Undercarriage</b>	
600mm steel track	o
Rubber Pads	o
Without dozer blade	o
<b>Attachment</b>	
Ditching buckets	o
X1 pipes	o
X3 pipes	o
Side or top mounted breakers	o
Log grapples	o
Front upper/front lower/top FOG (falling object guard)	o



Congratulations SDLG for winning  
**EFQM Global Excellence Award**  
 One of the top three quality awards in the world

**Member of the VOLVO Group Since 2007**

SDLG is member of the Volvo Group and one of the largest manufacturers of construction machinery in China, with a wide network of dealerships and service workshops throughout the world.

**Shandong Lingong Construction Machinery Co.,Ltd**

Add: Lingong Industry Park, Economic Development Zone, Linyi, Shandong, P, R, C.  
 Tel: 0086-531-66590966 Fax: 0086-531-66590959 E-mail: export@sdlg.com.cn



**Reliability in Action**

# E680F

## Hydraulic Excavator

### POWERFUL YET ENERGY-SAVING



The highly efficient four-cylinder Yanmar engine, coupled with an energy-saving hydraulic system, delivers both power and fuel economy. Nine gear modes and an auto-idle function ensure power on-demand, minimising fuel consumption and noise

### SMOOTH-OPERATIONS



The load-sensing hydraulic system is engineered to deliver first-class performance and efficiency. The variable piston pump offers precise control in a wide variety of work conditions

### SAFE AND COMFORTABLE



The cabin features excellent fields of vision, and is built on industry-leading vibration and noise reduction technologies. A powerful air-conditioning system provides comfort in cabin, reducing operator fatigue and improving productivity

### EASY TO MAINTAIN



Designed to minimise maintenance efforts, the main components, filter and electrical systems are grouped for easy, ground level access

### RELIABLE AND DURABLE



All core components in the engine and hydraulic systems are sourced from world-renowned manufacturers to meet our highest reliability standards. A robust structure provides excellent stability and machine durability

### MULTI-PURPOSE



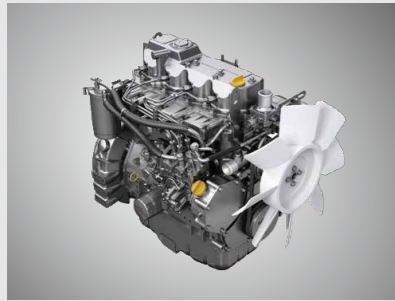
Access more applications with breaker piping, rubber pads and other optional accessories. This versatile machine is ideal for a wide variety of urban and rural tasks



\*The illustration may include optional equipment.

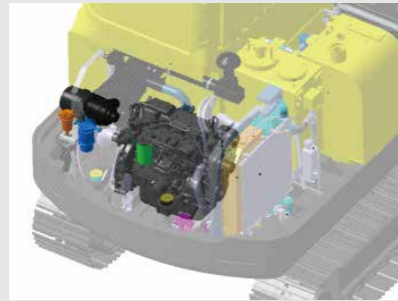
### POWERFUL ENGINE

- Yanmar engine with EGR
- Single rotor distribution pump for higher ignition pressure and better combustion
- ECU controlled



Multiple filters for prolonged engine life

- 3-stage fuel filters
- 2-stage air filters
- Oil-water separator

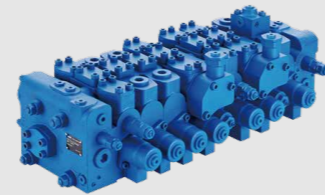
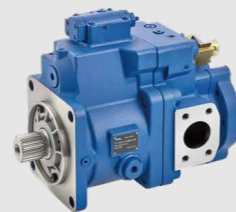
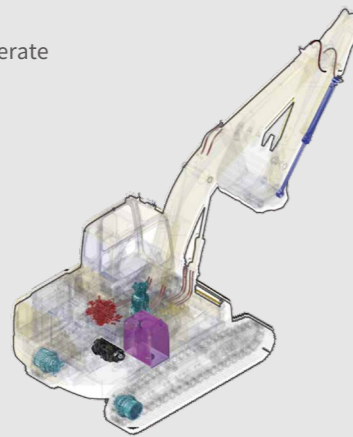
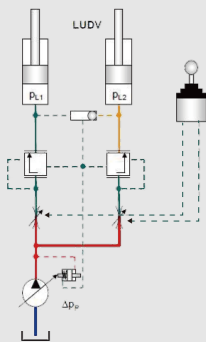


- 9 work modes
- Auto-idle function



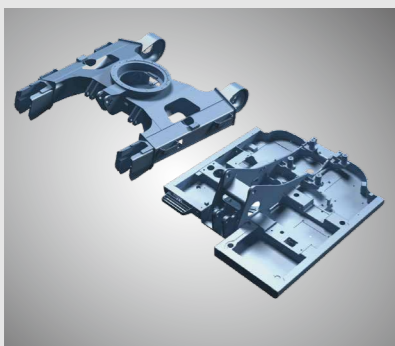
### EFFICIENT HYDRAULIC SYSTEM

- Load-sensing system
- Responsive and smooth to operate



### ROBUST STRUCTURE

- Integrated frame offering balanced load distribution
- Reinforced structures
- Large ground clearance



- Robotic-welded high-strength steel plates
- Stringent NDT procedures
- Reinforced joints

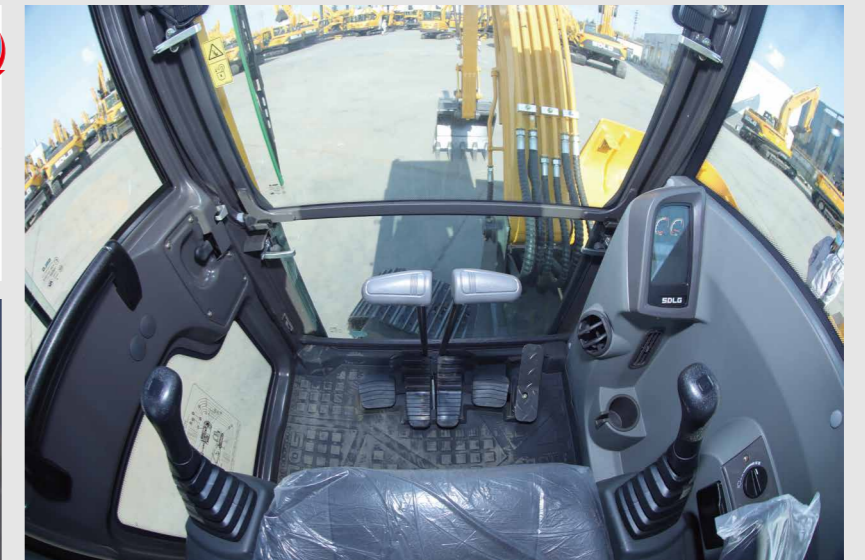
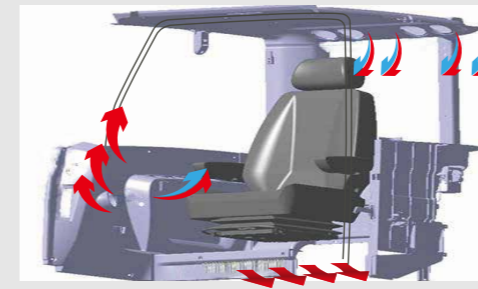


- Wear-resistant GP bucket lasting 20% longer



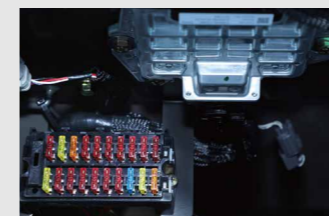
### SAFE AND COMFORTABLE CABIN

- Excellent fields of vision
- Large rear-view mirror
- Large wiper area
- Lock lever
- Good anti-slip
- Hydraulic cylinder protective covers
- Silicone oil shock absorbers
- 6-way adjustable mechanical suspension seat
- Strong A/C with multiple air outlets in a well-sealed cabin
- Tinted glass
- Multiple storage compartments



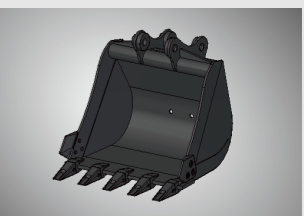
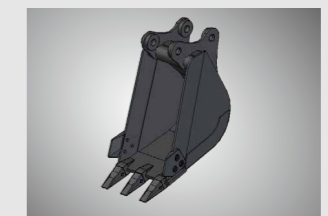
### EASY MAINTENANCE

- Grouped filters, electrics and lubrication points
- Easy access at standing height



### OPTIONAL ATTACHMENTS

- Top/side mounted breakers
- LM buckets
- Ditching buckets
- Log grapples



\*The abovemention illustrations may not refer to specific models.

### ENGINE

	Unit	E680F
Model	-	4TNV98-ZCVLGC
Type	-	In-line, water-cooled, four-stroke
Rated power	kW@rpm	42.8@2200
Max. torque	Nm@rpm	246.7@1575
Displacement	ml	3319
No. of cylinders	-	4
Cylinder bore x stroke	Φ×mm	98×110
Emission	-	Tier III GB 20891-2014)

### DRIVE AND BRAKES

	Unit	E680F
Drive motor	-	2 axial piston motors
Max drawbar pull	kN	65
Max travel speed (low/high)	km/h	2.86/5.0
Service/parking brakes	-	Wet disc, spring applied, hydraulic release
Gradeability	°	35

### SWING SYSTEM

	Unit	E680F
Swing motor	-	Axial piston motor
Swing brake	-	Wet disc
Swing speed	r/min	0~10

### UNDER CARRIAGE

	Unit	E680F
No. of track shoes	-	2×40
No. of top rollers	-	2×1
No. of bottom rollers	-	2×5
No. of track guards	-	2×0

### HYDRAULIC SYSTEM

	Unit	E680F
Hydraulic system type	-	Load-sensing
Main pump	-	1 variable displacement axial piston pump
Max flow rate	L/min	160
<b>Relief valve setting</b>		
Implement circuit	bar	245
Travel circuit	bar	280
Swing circuit	bar	235
Pilot circuit	bar	45

### ELECTRICAL SYSTEM

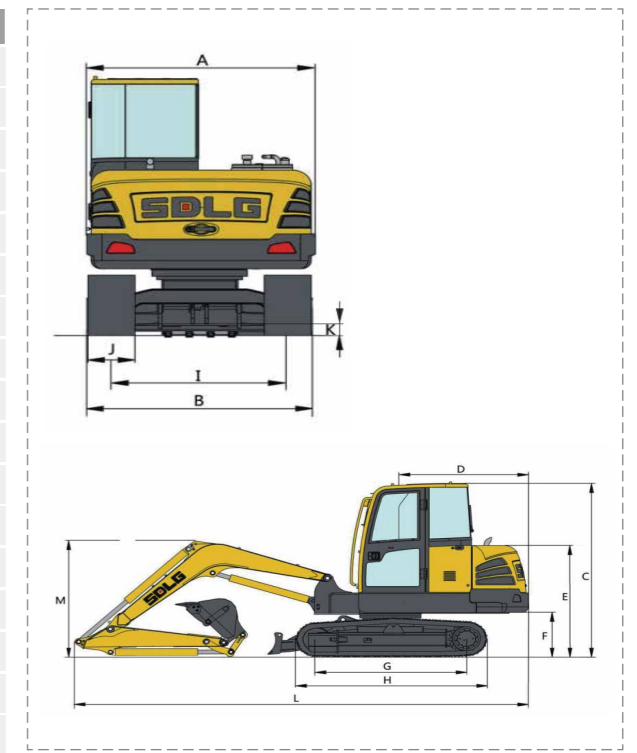
	Unit	E680F
System voltage	V	12
Battery voltage	V	12
Battery capacity	Ah	100
Alternator voltage	V	13.5
Starter voltage	V	12

### SERVICE REFILL CAPACITY

	Unit	E680F
Fuel tank	L	135
Engine coolant	L	13.5
Engine oil	L	12
Swing drive	L	0
Travel drive	L	2×1.1
Hydraulic tank	L	140
Hydraulic system	L	150

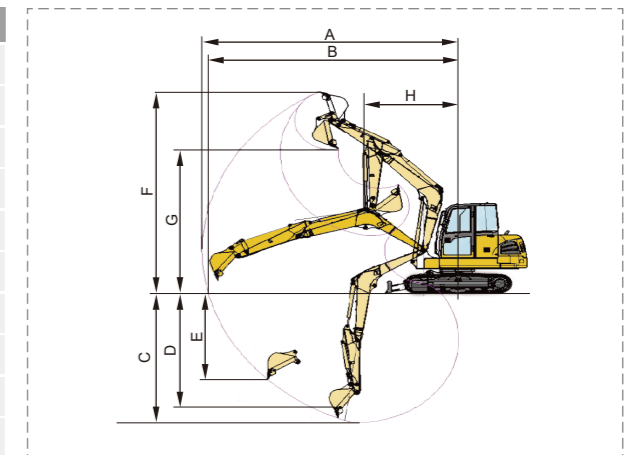
### DIMENSIONS

	Unit	E680F
Boom length	mm	3710
Arm length	mm	1650
A Overall width of upper assembly	mm	2255
B Overall width	mm	2240
C Overall height	mm	2600
D Tail swing radius	mm	1895
E Overall height of engine hood	mm	1790
F Counterweight clearance	mm	800
G Wheel base	mm	2220
H Track length	mm	2870
I Track gauge	mm	1780
J Track shoe width	mm	450
K Min. ground clearance	mm	400
L Overall length	mm	6340
M Overall height of boom	mm	2500
Bucket capacity	m <sup>3</sup>	0.32
Operating weight	kg	7800



### EXCAVATING RANGE

	Unit	E680F
A Max. digging reach	mm	6340
B Max. digging reach on ground	mm	6192
C Max. digging depth	mm	4150
D Max. digging depth (horizontal 2.44m)	mm	3800
E Max. vertical wall digging depth	mm	3750
F Max. digging height	mm	7200
G Max. dumping height	mm	5057
H Min. front swing radius	mm	1760
Max. digging force--bucket (ISO)	kN	56
Max. digging force--arm (ISO)	kN	38



### ATTACHMENTS

	Model	Capacity/m <sup>3</sup>	Width/mm	Weight/kg	Number of teeth/side cutters
Bucket	E680F	0.25-0.32	730-810	216-258	5/2
	Model	Diameter/mm	Weight/kg	Pressure/bar	Frequency/bpm
Breaker (Side mounted)	E680F	75	335	120-150	500-900