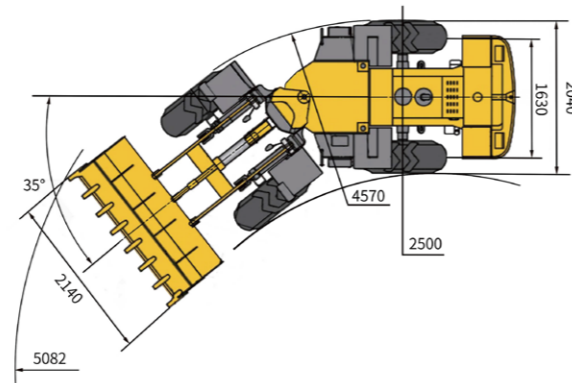
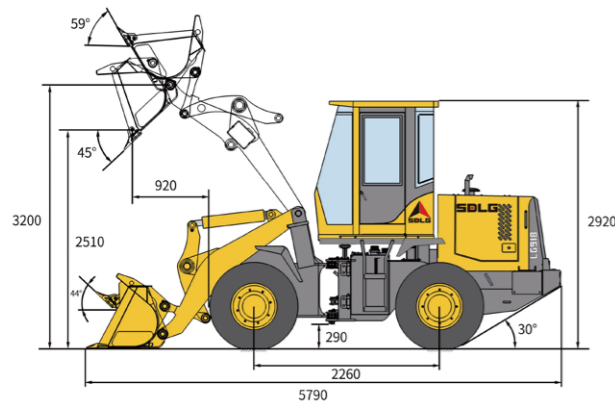


Main Parameter (Standard Equipment)

Item	Specifications	Item	Specifications
Overall parameter			
Operating weight (kg)	6150	Speed at RI (km/h)	0~9.6
Rated load (kg)	1800	Speed at FI (km/h)	0~26.5
LxWxH (mm)	5790x2140x2920	Speed at RII (km/h)	0~25
Bucket capacity (m ³)	1.0	Hydraulic system of working device	
Max. tractive force (kN)	≥56	System pressure	17.5MPa
Max. breakout force (kN)	≥58	Total cycle time (bucket lift & dump & fall)	≤9.1s
Tipping load (kN)	≥36	Steering system	
Engine			
Rated power/speed	58kw (79Hp) @2400r/min	System pressure	12MPa
Emission standard	GB20891-2007 (stage II)	Fill capacity	
Transmission system			
Transmission type	Axis-fixed power shift	Fuel (L)	120
Gears	F2 & R2	Hydraulic oil (L)	100
Speed at FI (km/h)	0~10	Engine (L)	13
		Transmission (L)	20
		Drive axle (L)	2x10
		Braking system (L)	4



LG918 WHEEL LOADER

Operation Weight: 6150 kg
Bucket Capacity: 1.0 m³
Engine Power: 58 kW

Reliability in Action



Congratulations SDLG for winning
EFQM Global Excellence Award
One of the top three quality awards in the world

Part of Volvo Group since 2007

SDLG is part of Volvo Group and one of the largest manufacturers of construction machinery in China, with a wide network of dealerships and service workshops throughout the world.



Shandong Lingong Construction Machinery Co.,Ltd

Add: Lingong Industry Park, Economic Development Zone, Linyi, Shandong, P, R, C.
Tel: 0086-531-66590966 Fax: 0086-531-66590959 E-mail: export@sdlg.com.cn





LG918 Wheel Loader

High Efficiency

- YUCHAI Engine Tier 2/ T3;
- The energy-saving low-speed engine fits well with the high-efficiency and realizes a comprehensive energy saving of more than 10%;
- High market share and high reliability; Low maintenance cost.



High Reliability

- Fixed shaft power shift gearbox with high/low speed, F2/R2;
- Easy operation, high reliability, convenient maintenance.



Heavy-Duty

- Enhanced driving axle is the best in performance, to meet the driving force and escape ability of bad conditions;
- Stable and reliable performance, convenient operation and maintenance.



Greater Reliability

- Articulated frame with large turning angle and small turning radius, which increases the maneuverability of this machine.
- Strong bearing capacity, the load distributes reasonably, good stability performance.



Greater Carrying Capacity

- Lift arm uses the lightweight technology, the effective load of each work cycle of the increased 2%, to achieve the energy saving;
- Bucket is made of protruding type cutting board. The bottom antifriction plate is thickened, with little cutting resistance, increases 10% in load capacity, improves the working efficiency greatly.



Reliability and Efficiency

- Load sensing full hydraulic steering system, with light and quick steering and reliable energy saving properties;
- Optimize the design of working efficient hydraulic system;
- Pilot-control working device hydraulic system, with high operating efficiency and easy operation;
- Low-effort, pilot-operated joystick controls are designed to match your natural wrist and arm position for maximum comfort and minimum fatigue.



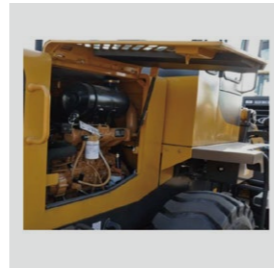
Wide Vision

- New steel structure cab, the Large operation space is increased by 15%;
- Wide vision, Good sealing and Low noise, to realized a comfortable driving environment;
- The air conditioner and ROPS&FORS cab can be installed optionally.



Convenience

- Side-opening type steel-made engine hood with large side door, which is beautiful and graceful and easy to maintain;
- Enough Height for people to check the engine.



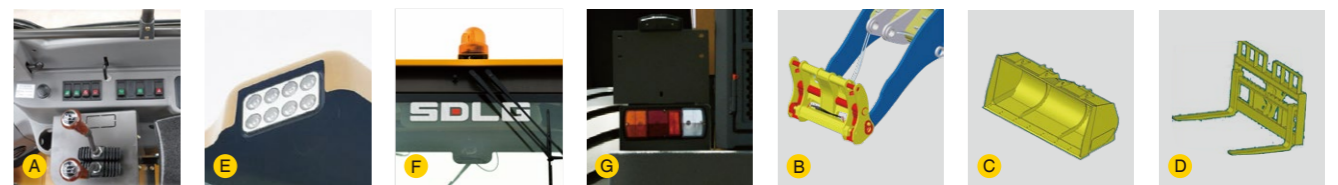
Standard Configurations

Yuchai YC4D80-T20		Clothes-hook	
Shantui transmission		Cup holder	
SDLG dry brake axle		Centralized control box	
Dual pipeline braking		Front & rear wiper	
Single joystick pilot control	A	Work lights	F
1.0m³ GP bucket with teeth		Backing-up alarm	
Standard cabin		GB2980-16/70-20	
Fresh air conditioning		Engine fan guard	
Adjustable steering column	B	Neutral start	
Digital combination instrument	C	Air pre-filter	
Air control parking brake		Power switch	G
Radio	D	Tool box	
Sun visor	E		



Optional Equipment

Double joystick pilot control	A	1.4m³ light material bucket	C	Air intake preheating	
Extension arm		Wear plate bucket		License plate bracket	G
Full hydraulic brake system		Pallet fork	D	Heater	
Quick hitch	B	LED work lights	E	Rotatable oil cooler	
Rops/Fops cabin		Rotating beacon	F	Tire protect chain	
16/70-20 (TL) -16PR-L-3 tubeless		3rd function connector			



* The right of final interpretation of the abovementioned parameters shall be reserved by SDLG. No further notice will be given in case of any change. Illustrations in the text may not always be the standard illustrations for this model.