

Equipment and Features

STANDARD EQUIPMENT

E635F	
Engine	
Yanmar engine	S
Turbocharger	-
Two-stage air filters	S
Three-stage fuel filters	S
Fuel water separator	S
Electrical/Electronic control system	
Restart prevention	S
Central fuse box	S
High-capacity halogen work lights (Frame-mounted 2 & Boom-mounted 1 LH)	S
Battery, 12V	S
Master electrical disconnect switch	S
Start motor, 12V	S
Colour monitor	S
Lock lever	S
Hydraulic system	
Load-sensing hydraulic system	
Boom/Arm/Swing priority	S
Boom/Arm regeneration	S
Boom/Arm holding	S
Boom Swing	S
Cylinder/motor cushioning	S
Antifouling sealing	S
Hydraulic oil (ISO VG46)	S
Multi-stage filtration	S
Frame	
Reinforced revolving frame	
Dozer blade	S
Rear-view mirror	S
Tool storage area	S

Undercarriage

Durable "X" under-carriage	S
Greased and sealed track links	S
Reinforced carrier/top roller	S

Cab and interior

Fabric operator seat with suspension	S
Seat belt	S
Joysticks	S
Radio with MP3/AUX	S
Master key	S
Hour meter	S
Sun visor	S
Air conditioner	S
Sliding wind screen	S

OPTIONAL EQUIPMENT

E635F

Electrical/Electronic control system

Rotating warning beacon	o
Rear-view camera	o

Undercarriage

Rubber track	o
Wider dozer blade	o

Attachment

Ditching bucket	o
X1 pipes	o
X3 pipes	o
Breaker	o
Log grapple	o



E635F

Hydraulic Excavator



Congratulations SDLG for winning
EFQM Global Excellence Award
 One of the top three quality awards in the world

Member of the VOLVO Group Since 2007

SDLG is member of the Volvo Group and one of the largest manufacturers of construction machinery in China, with a wide network of dealerships and service workshops throughout the world.

Shandong Lingong Construction Machinery Co.,Ltd

Add: Lingong Industry Park, Economic Development Zone, Linyi, Shandong, P, R, C.
 Tel: 0086-531-66590966 Fax: 0086-531-66590959 E-mail: export@sdlg.com.cn



Reliability in Action



E635F Hydraulic Excavator

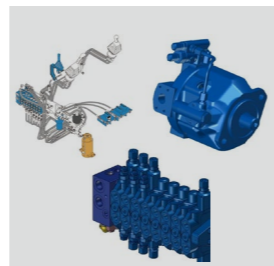
POWERFUL YET ENERGY-SAVING

- Low Engine speed, large torque. The fuel efficiency and the torque matched perfectly, the fuel saving effect is obvious



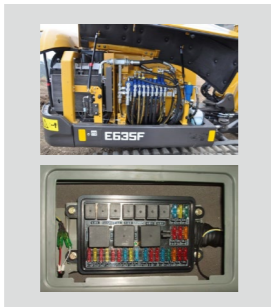
SMOOTH-OPERATIONS

- Using load-sensing hydraulic system, Hengli pump & valve, with regeneration, holding and other functions, the speed of action is not affected by the load, good coordination of composite action, high efficiency



EASY TO MAINTAIN

- The opening Angle of the engine hood is large, the fuel filter, hydraulic system filter and pressure measuring port are arranged centrally, which is within easy reach and easy to maintain
- Relay & fuses are centrally placed in the rear interior of the cab, which is convenient and reliable for maintenance



MULTI-PURPOSE

- Can realize quick change and a variety of accessories configuration, to meet the user's needs of one machine and multiple working conditions.



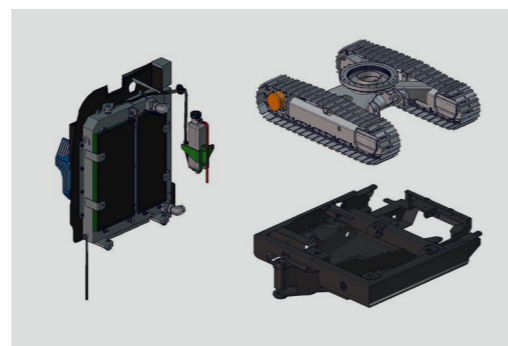
SAFE AND COMFORTABLE

- Optimized suspension structure, small vibration, good stability
- Ergonomic design of the new generation of cab, front and rear wide vision, high strength, good sealing performance
- High - grade interior decoration, suspension seats, air - conditioning operation environment is safe and comfortable
- Digital step-by-step combination instrument display, high man-machine interaction

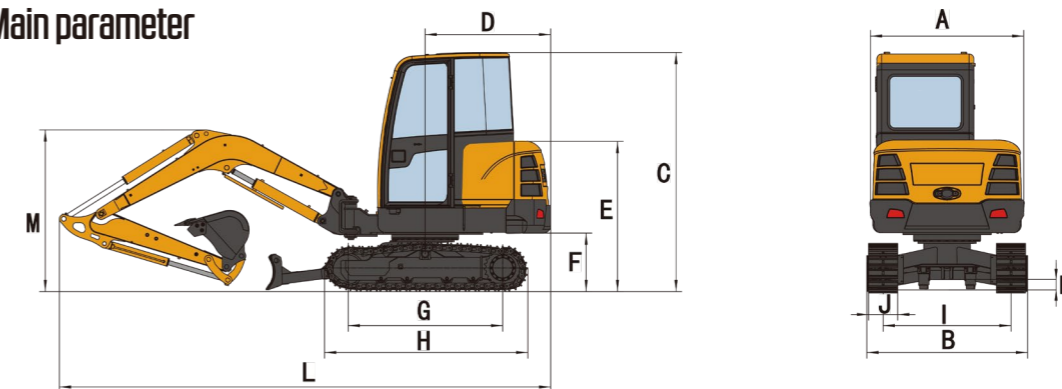


RELIABLE AND DURABLE

- The overall reinforced type upper framer, the load distribution is uniform
- The bottom frame has high strength, large bearing capacity, high ground clearance, good passability
- The working device is made of high tensile strength steel plate shaft seat and welding clap-board in the middle part of the whole casting, which is reliable and durable
- Mature and reliable undercariage, superior performance, long service life; Good ground grip performance, outstanding wear resistance Adopt aluminum plate fin type radiator, radiator seal adopts steel plate and rubber strip seal Large heat exchange area, strong heat exchange capacity, conducive to rapid heat dissipation and cooling, Reliable sealing performance, so that all the cooling air through the radiator, more conducive to heat dissipation



Main parameter



Item	Specifications
Overall dimension	
LxWxH (LxBxC)	5165x1620 x2450 mm
Overall width of upper assembly (A)	1580 mm
Tail swing radius (D)	1400 mm
Overall height of engine hood (E)	1535 mm
Ground clearance of counterweight (F)	590 mm
Wheel base (G)	1602 mm
Crawler length (H)	2057 mm
Crawler gauge (I)	1320 mm
Crawler pad width (J)	300 mm
Min. ground clearance (K)	257 mm
Overall height of boom (M)	1585 mm
Overall parameter	
Bucket capacity	0.11 m³
Overall operating weight	3600 kg
Max. excavation force	32 KN
Slew speed	9.5 r/min
Traveling speed (low/high)	2.8/4.8 km/h
Average ground pressure	33.5 kPa
Max. digging radius	5300 mm
Max. digging depth	3085 mm
Max. digging height	4800 mm
Max. dumping height	3420 mm
Min. front swing radius	2040 mm
Engine	
Model	4TNV88-BSLG
Type	Four-cylinder, In-line, Water-cooled
Rated Power/Revolution Speed	26.3kw/2200r/min

Item	Specifications
Displacement	2190mL
Cylinder bore × stroke	88×90
Emission standard	China PhaseIII
Rated fuel consumption	244g/kw.h
Max. torque	143.5N.m
Traveling/swing system	
Qty. of carrier rollers (single side)	1
Qty. of track rollers (single side)	4
Traveling brake type	wet disc
Swing mode	Hydraulic drive internal tooth single-row ball-bearing
Swing brake type	wet disc
Hydraulic system	
Hydraulic control type	Pilot proportional control valve
Hydraulic system type	Constant power load sensitive single pump
Max. flow	99L/min
Main pump model	HP5V45
Operating pressure	234kgf/cm²
Main valve model	HVSE-09-08
Arm cylinder - cylinder bore × diameter of piston rod × stroke	1-80×50×670mm
Boom cylinder - cylinder bore × diameter of piston rod × stroke	1-90×50×559mm
Bucket cylinder - cylinder bore × diameter of piston rod × stroke	1-70×45×490mm
Fill capacity	
Fuel	55L
Engine oil	7.4L
Hydraulic oil	75L
Traveling reducer	2×0.6L
Cooling liquid	7L

* The right of final interpretation of the abovementioned parameters shall be reserved by SDLG. No further notice will be given in case of any change. Illustrations in the text may not always be the standard illustrations for this model.