

Reliability in Action



E765F

Wheeled Excavator



EFQM



SDLG machines are built to be like the people that own them: hardworking, genuine and reliable. Cost effective, robust machines with fuel efficient engines that are easy to operate and easy to maintain. And when you need parts or service, you can trust your dealership to deliver on the SDLG promise: **Reliability in Action.**




EFQM
Congratulations to SDLG on winning
the **EFQM Global Excellence Award**
One of the world's top three quality awards



Shandong Lingong Construction Machinery Co., Ltd.
Add: Lingong Industry Park, Economic Development Zone, Linyi, Shandong, P. R. China
Tel: + 86-531-66590505 Fax: + 86-531-66590505 E-mail: export@sdlg.com Website: www.sdlg.com



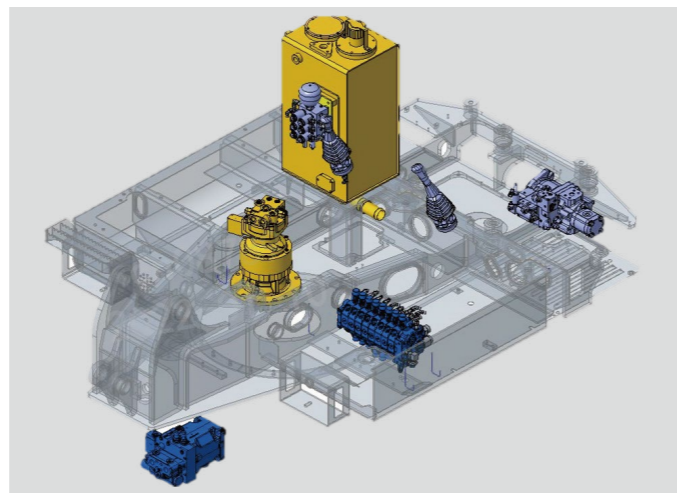
Flexible and adaptable to working conditions

- ◆ The traveling motor drives the gearbox with high driving force to move quickly and flexibly; both forward and reverse gears are able to operate at high or low speed. The accelerator pedal works with constantly variable transmission and has high adaptability to working conditions.



Efficient fuel saving and quick return on investment

- ◆ YANMAR engine matches well with the hydraulic system, providing sufficient power and significant fuel saving performance.
- ◆ SDLG 6T mature hydraulic system has high action speed, excellent controllability and high operation efficiency.

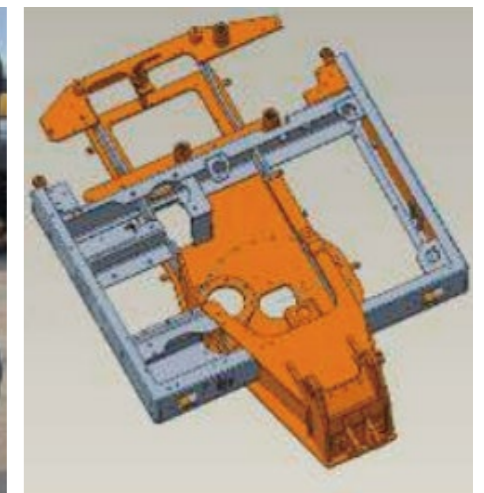


Reliable quality of core components

- ◆ Equipped with well-known brand gearbox and hydraulic motor drive, with powerful moving and high reliability; provided with the front and rear axles of well-known brands, with strong driving force, solid working condition adaptability and reliable quality.



- ◆ The reinforced working device, wear-resistant bucket, mid-bearing upper frame, and box type lower frame are to offer high strength and long service life.
- ◆ Robot welding and weld flaw detector are used for inspection to ensure high reliability.

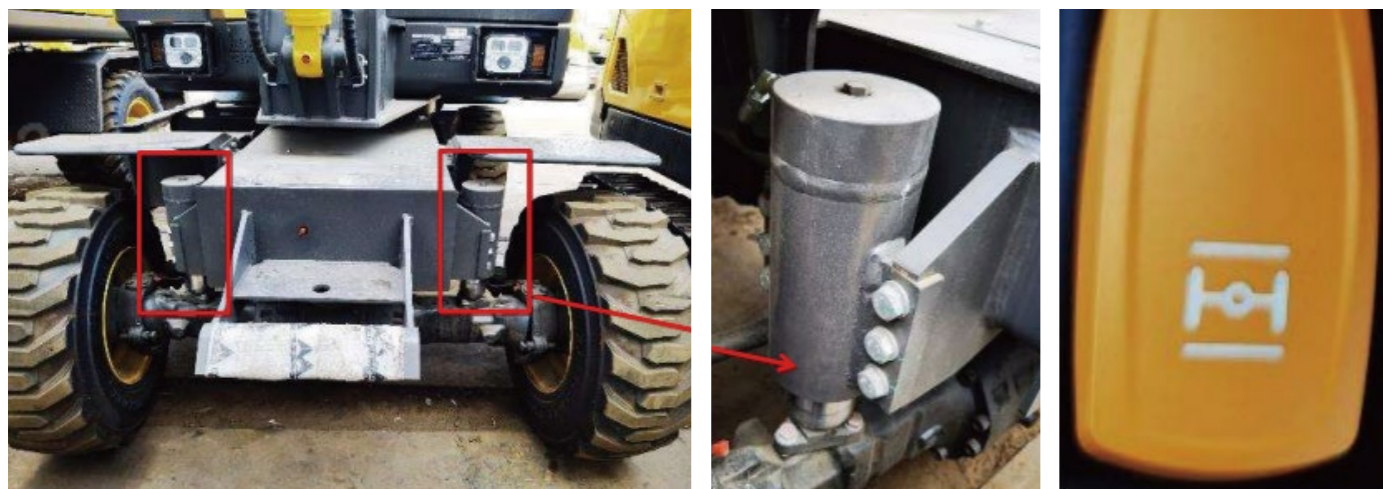


Multiple protections for personal and machine safety

- ◆ Once the control box is lifted, the safety lock lever will be locked automatically.
- ◆ Service brake pedal locking: if applied in working status, the service brake pedal will be locked, and the machine will be in the braking state, which is safe and reliable.



- ◆ The front axle is equipped with double cylinders to reduce vibration. The axle locking function will be enabled during transportation and excavation or if the bulldozer blade is not in use, thus preventing the excavator body from shaking.



Comfortable operation and convenient maintenance

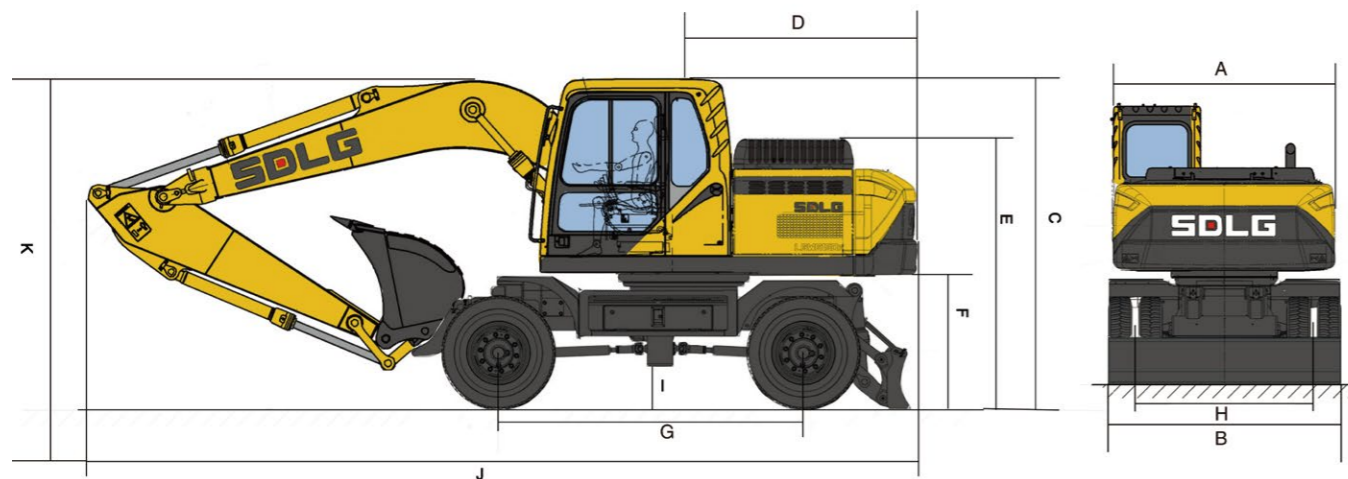
- ◆ There is 3-stage vibration damping at the engine, cab and seat; and the eye-catching LCD monitor to provide a comfortable driving environment.
- ◆ The seat height is adjustable, and the steering column is adjustable horizontally. The steering wheel does not block the view, so a wide view is available.
- ◆ The pilot handle is in lightweight, flexible and easy to operate, which will ease the driver's fatigue.



- ◆ Parts for maintenance are concentrated in the open hood to facilitate maintenance.



E765F Main Parameter



Item	Specifications	Item	Specifications
Overall dimensions		Overall parameters	
Overall width of upper assembly(A)	1870mm	Bucket capacity	0.21m ³
Overall width(B)	1920mm	Overall operating weight	5700kg
Overall height(C)	2920mm	Max. excavation force	45kN
Tail swing radius(D)	1670mm	Slew speed	11min
Overall height of engine hood(E)	2000mm	Traveling speed (low/high)	10/30km/h
Ground clearance of counterweight(F)	990mm	Max. digging radius	6160mm
Wheelbase(G)	2100mm	Max. digging depth	3495mm
Crawler gauge(H)	1600mm	Max. digging height	6000mm
Min. ground clearance(I)	280mm	Max. dumping height	4340mm
Overall length(J)	6045mm	Min. front slewing radius	2480mm
Overall height of boom(K)	2920mm		

Item	Specifications	Item	Specifications
Engine		Hydraulic system	
Model	4TNV98-EXSLGC	Hydraulic system type	Load-sensing control system
Type	Four-stroke, in-line, water-cooled	Max. flow	138+26L/min
Engine power	39kW	Main pump model	HP3V80
Displacement	3319ml	Operating pressure	22.5MPa
Cylinder bore×stroke	4-98×110mm	Main valve model	HVSE-12
Emission standard	GB20891-2014(China Tier 3)	Arm cylinder-cylinder bore× diameter of piston rod×stroke	1-90×55×816mm
Min.fuel-consume ratio	238g/kW.h	Boom cylinder-cylinder bore× diameter of piston rod×stroke	1-105×60×705.5mm
Max. torque/speed	(191.8~208.6)N.m/1650r/min	Bucket cylinder-cylinder bore× diameter of piston rod×stroke	1-80×50×660mm
Traveling/swing system		Fill capacity	
Qty. of track rollers (single side)	/	Fuel	130L
Qty. of carrier rollers (single side)	/	Engine oil	12L
Traveling brake type	Wet disc brake	Hydraulic oil	50L
Swing mode	Hydraulic drive internal tooth single-row ball-bearing	Antifreeze	10L
Swing brake type	Wet and disc type	Traveling reducer	-
Hydraulic system		Slewing reducer fuel amount	1.2L
Hydraulic control type	Pilot proportional control		

* The right of final interpretation of the abovementioned parameters shall be reserved by SDLG. No further notice will be given in case of any change, illustrations in the text may not always be the standard illustrations for this model.